



Draw the hour and minute hand on the clock so it represents the time shown.

1) 3:15



2) 2:30



3) 7:30



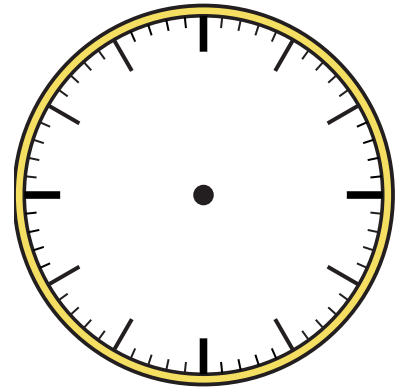
4) 12:15



5) 2:15



6) 12:45



7) 5:45



8) 8:00



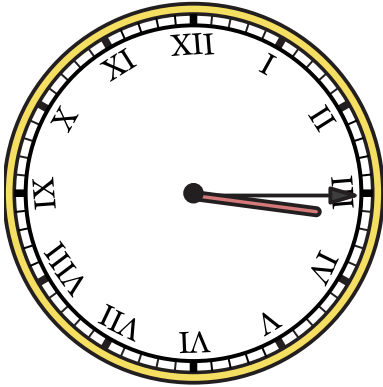
9) 12:00



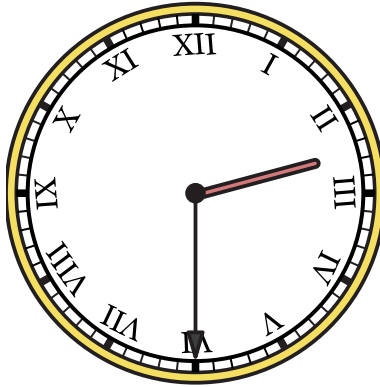


Draw the hour and minute hand on the clock so it represents the time shown.

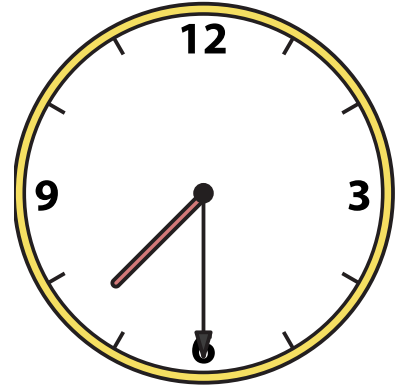
1) 3:15



2) 2:30



3) 7:30



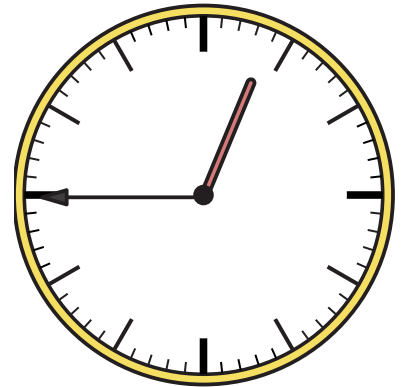
4) 12:15



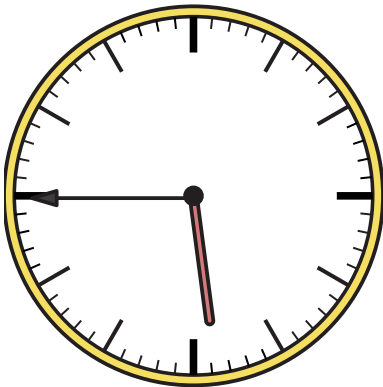
5) 2:15



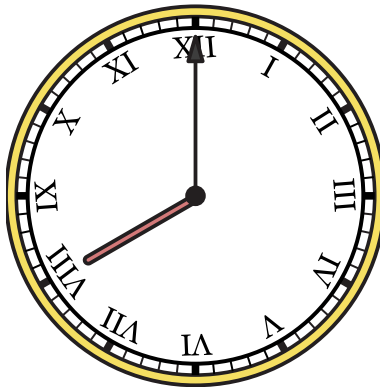
6) 12:45



7) 5:45



8) 8:00



9) 12:00

