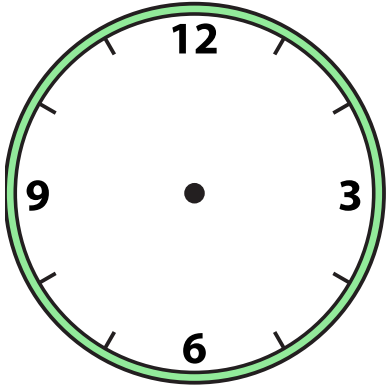


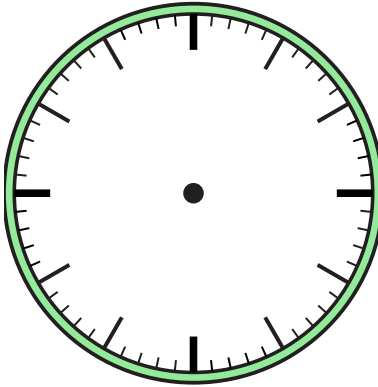


Draw the hour and minute hand on the clock so it represents the time shown.

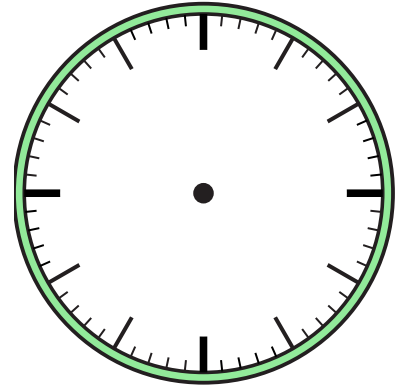
1) 11:30



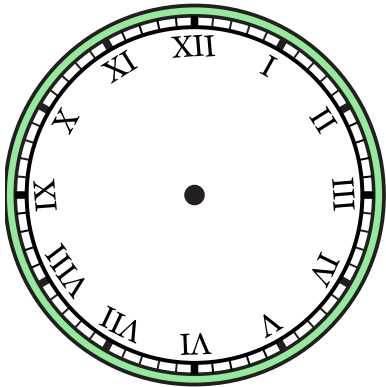
2) 9:30



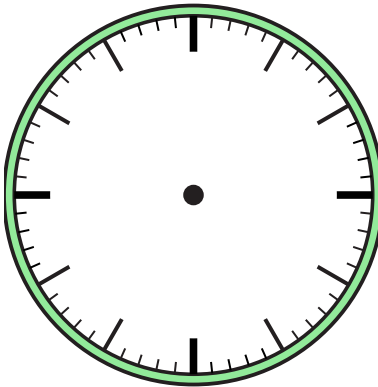
3) 7:00



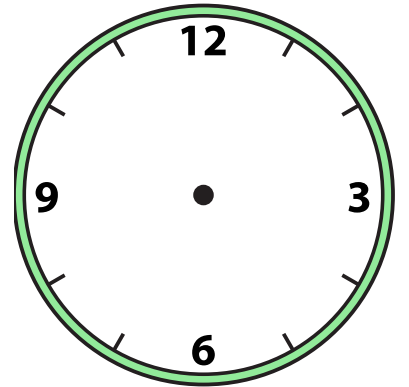
4) 8:30



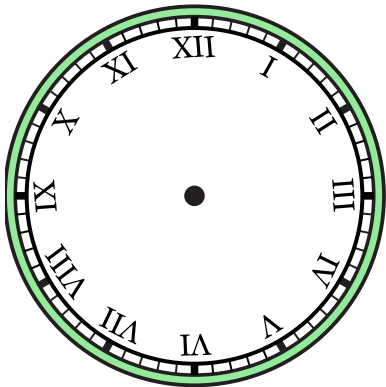
5) 5:00



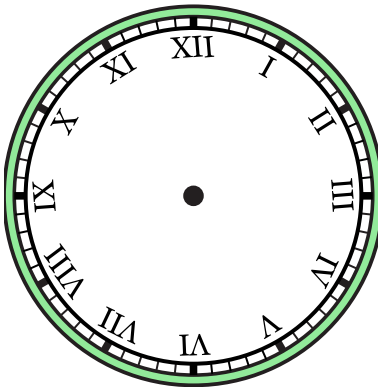
6) 8:00



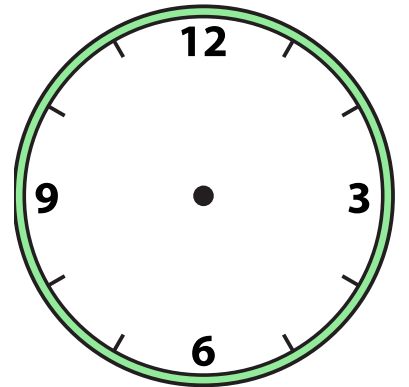
7) 1:30



8) 5:30



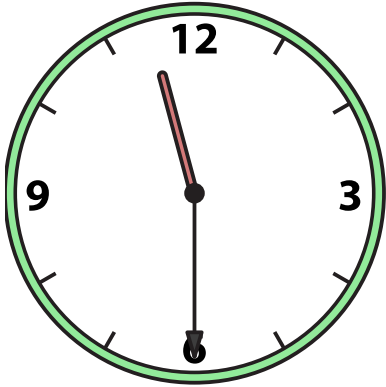
9) 12:30



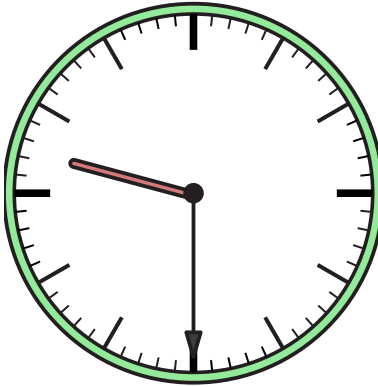


Draw the hour and minute hand on the clock so it represents the time shown.

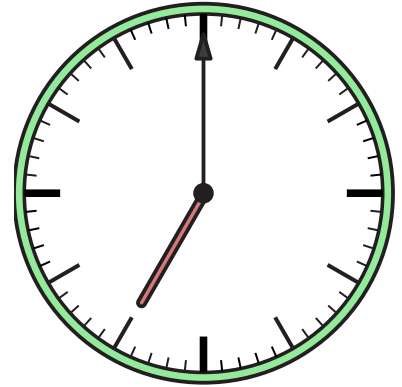
1) 11:30



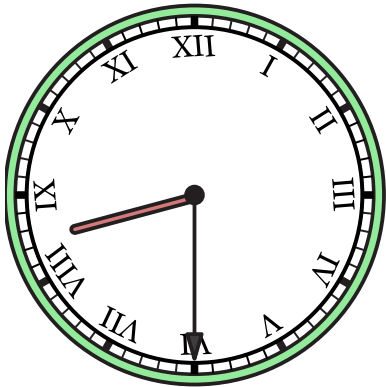
2) 9:30



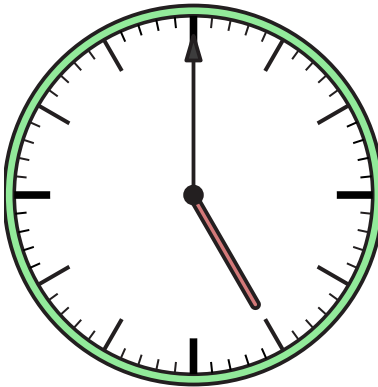
3) 7:00



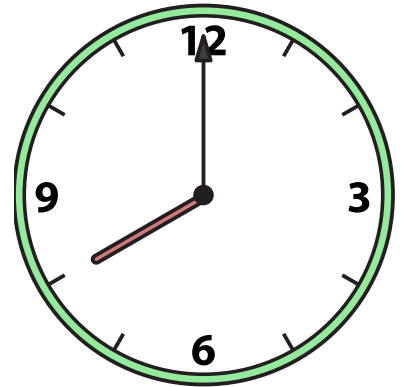
4) 8:30



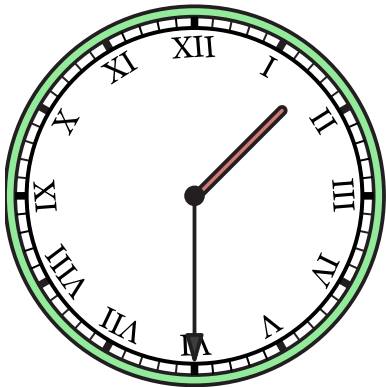
5) 5:00



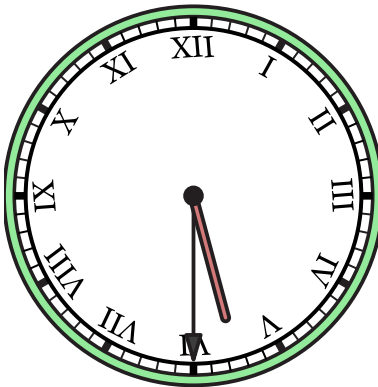
6) 8:00



7) 1:30



8) 5:30



9) 12:30

